


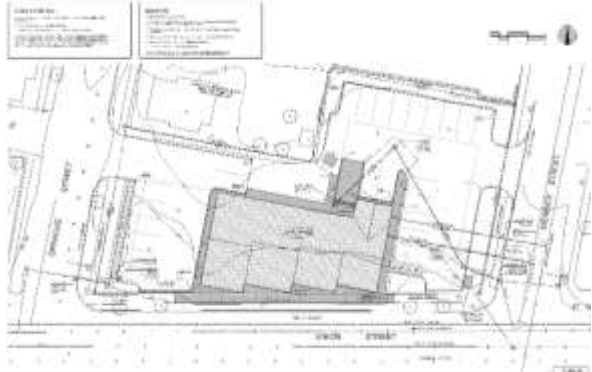
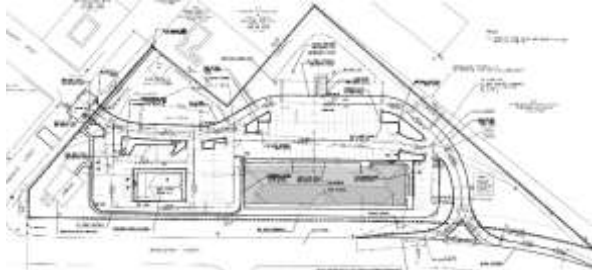

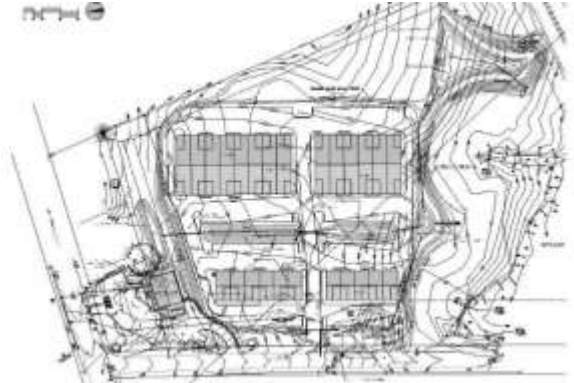


Project	Year	Category	Work Provided	Image
Post Office South Deerfield, MA	1999	Commercial Developer	Site Design of a US Post Office facility; included permitting for a 5,440 sq. ft. building with associated parking space, underground utilities, and stormwater system.	
Target Retail Store Hadley, MA	2003	Commercial Developer	Design of a large parking area and traffic configuration of a retail store; included permitting for underground utilities, and stormwater management system.	
Trader Joe's Hadley, MA	2003	Commercial Developer	Site plan and design of grocery store and design of associated parking space, underground utilities, and stormwater system.	

Project	Year	Category	Work Provided	Image
Grocery Store West Springfield, MA	2004	Commercial Developer	Project management and design of a site plan for a grocery store, and design of associated parking space, underground utilities, and stormwater system.	
Shopping plaza complex Indian Orchard - Springfield, MA	2005	Commercial Developer	Project management and design of an 18,000 sq. ft. building. Facilities for retail, business, and medical Plaza, with associated parking area, traffic configuration, intersection connection, underground utilities, and stormwater design.	
Polish National Credit Union (bank), Westhampton, MA	2008	Commercial Developer	Project management and design of a 3,200 sq. ft. building facility for a financial institution, with associated parking area, traffic configuration, intersection connection with MassDOT road, underground utilities, septic system design, and stormwater design.	

Project	Year	Category	Work Provided	Image
---------	------	----------	---------------	-------

Town Line Industrial Suites Southampton, MA	2007- 2008	Industrial/Commercial Developer	Project management and design of a 9.4-acre development for a 2,700 sq. ft. building facility for a financial institution, and 7,300 sq.ft. of industrial and commercial building for professional tradesman and storage facilities, with associated parking area, traffic configuration, intersection connection with MassDOT road, underground utilities, and stormwater design.
--	---------------	------------------------------------	--



VCA – Industrial Facility Northampton, MA	2008	Industrial Development	Project management and design of parking area, traffic configuration, and underground utility connections to municipal system for a 20,000 sq. ft. furniture manufacturer facility, and coordination of the permitting approval.
--	------	---------------------------	--

